



Advanced Technology  
INTERNATIONAL

# Mossberg Akita Adjustable Stock and Forend

## Installation Instructions

PART# A.1.10.1250, A.1.20.1250, A.1.30.1250  
(Fits: 12 Ga Mossberg 500/535/590/835)



### Stock Installation

*Point the shotgun in a safe direction and place the safety in the "on" position. Next pull back the slide, and carefully inspect the chamber and magazine to be sure the shotgun is unloaded.*

#### Step #1

Remove the existing recoil pad from your stock by unscrewing the two phillips head screws in the rear of the pad.



Figure 1

#### Step #3

Using a phillips head screwdriver unscrew and remove the recoil pad from the rear of the ATI stock.



Figure 3

#### Step #2

Next use a long flat head screwdriver or appropriate socket with extension to remove the stock bolt from the inside of the opening in the rear of the stock.



Figure 2A

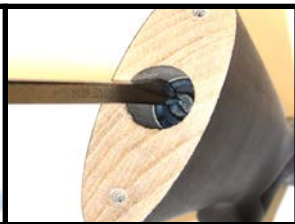


Figure 2B

#### Step #4

Using a phillips head screwdriver unscrew and remove the screw from the rear of the lever housing.

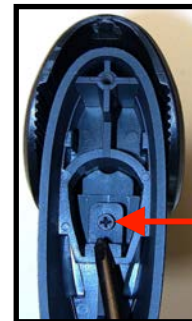


Figure 4

Advanced Technology International • Made In the USA • Limited Lifetime Warranty  
2733 West Carmen Ave • Milwaukee, WI 53209  
Toll Free: 800.925.2522 • Fax: 414.464.3112



# Mossberg Akita Adjustable Stock and Forend

## Installation Instructions

PART# A.1.10.1250, A.1.20.1250, A.1.30.1250

(Fits: 12 Ga Mossberg 500/535/590/835)

Advanced Technology  
INTERNATIONAL

### Stock Installation

#### Step #5

Remove the lever assembly from the bottom of the stock, and remove the buttstock from the grip slide.



Figure 5A

Figure 5B

#### Step #6

Locate the appropriate bolt for stock installation. Depending on when the stock was purchased, you will use either the 5/16-18 x 5 1/2" hex head bolt or the 5/16-18 x 5 1/2" socket head cap screw.

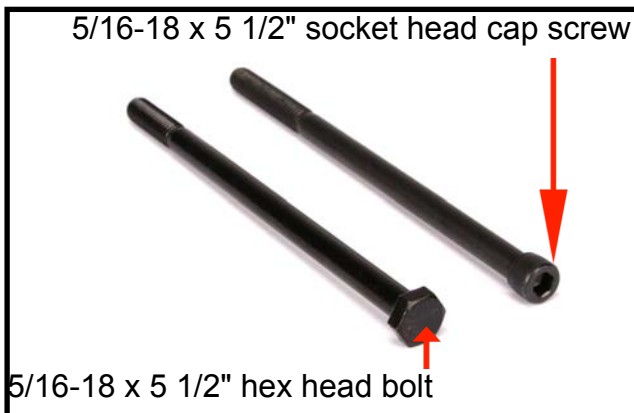


Figure 6

#### Step #7

Using the appropriate bolt, insert the bolt with the washer and lock washer into the grip slide.

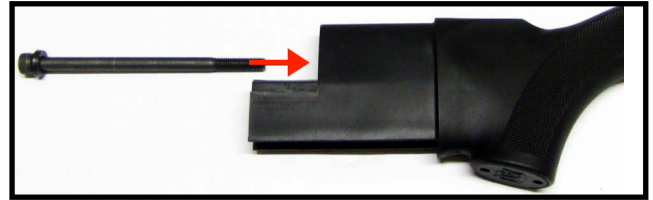


Figure 7

#### Step #8

Using the appropriate adapter (No Adapter for Mossberg), place the front portion of the stock onto the gun and tighten the stock bolt, washer, and lock washer to the receiver with a 1/2" socket and extension or 7/32" allen wrench depending on which bolt you are using.

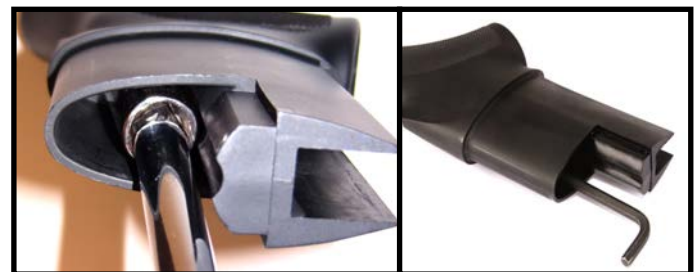


Figure 8A

Figure 8B

Advanced Technology International • Made In the USA • Limited Lifetime Warranty

2733 West Carmen Ave • Milwaukee, WI 53209

Toll Free: 800.925.2522 • Fax: 414.464.3112



# Mossberg Akita Adjustable Stock and Forend

## Installation Instructions

PART# A.1.10.1250, A.1.20.1250, A.1.30.1250

(Fits: 12 Ga Mossberg 500/535/590/835)

Advanced Technology  
INTERNATIONAL

### Stock Installation

#### Step #9

Slide the rear portion of the buttstock on to the grip slide to the fully closed position, and insert the lever assembly into the bottom of the stock. You can now reinstall the rear lever housing screw you removed earlier.



Figure 9A

Figure 9B

#### Step #10

Next, reinstall the recoil pad to the back of the stock using a phillips head screw driver.



Figure 10

#### Step #11

Adjust the cheek rest by removing the screw cover and the small set screw. The cheek rest slides back toward the recoil pad and can then be moved up or down. Slide it back into place at the desired height and reinstall the set screw and cover.

**Note: Snap in cheekrest plugs are used on the camo version, use a small screwdriver or similar tool to pop out the plug.**

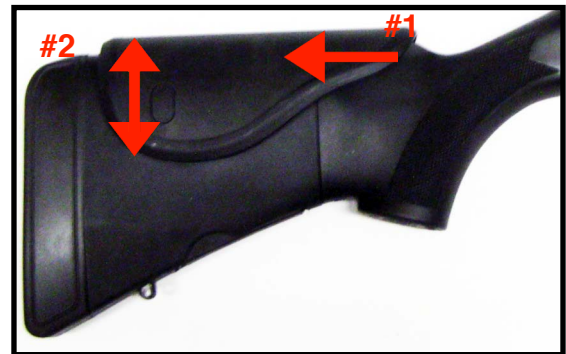


Figure 11

Advanced Technology International • Made In the USA • Limited Lifetime Warranty  
2733 West Carmen Ave • Milwaukee, WI 53209  
Toll Free: 800.925.2522 • Fax: 414.464.3112



# Mossberg Akita Adjustable Stock and Forend

## Installation Instructions

PART# A.1.10.1250, A.1.20.1250, A.1.30.1250

(Fits: 12 Ga Mossberg 500/535/590/835)

Advanced Technology  
INTERNATIONAL

### Forend Installation

**Forends on the newer version of the Mossberg 500A, B and C and the Mossberg 835 cannot be replaced because the action bars are attached to the forend.**

**NOTICE:** Once you have prepared your Shotgun Forend for Installation, remove all of the Forend Ribs before installing the Forend onto your Firearm.

**DO NOT Attempt to Install your Forend with the Ribs still in place.**



#### Step #1

Cycle the action once to make sure the hammer is cocked. Next engage the safety.

#### Step #2

Depress the slide release and pull the forend halfway back. Next loosen the magazine cap and remove the barrel.

#### Step #3

Remove the trigger group retaining pin by tapping it out with a blunt pin no greater than 3/16" in diameter.

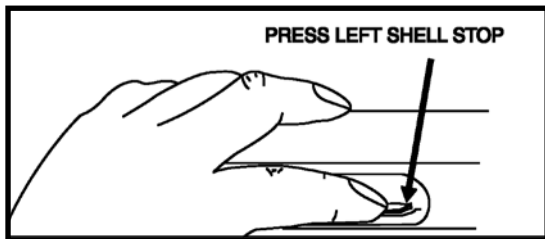


Figure 1

#### Step #4

Place the shotgun upside down and pull out the trigger group by lifting up at the rear. (Fig. 2)

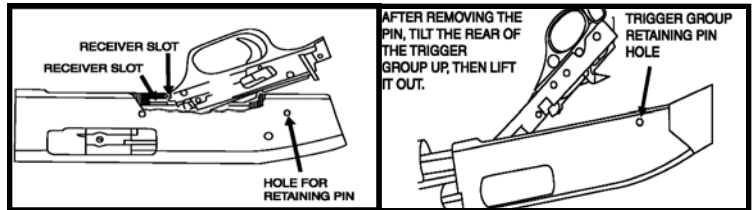


Figure 2

Figure 3

#### Step #5

Remove the shell stop and the shell interrupter from the receiver.

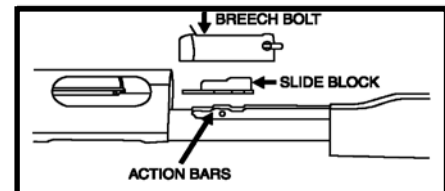


Figure 4

Advanced Technology International • Made In the USA • Limited Lifetime Warranty

2733 West Carmen Ave • Milwaukee, WI 53209

Toll Free: 800.925.2522 • Fax: 414.464.3112



# Mossberg Akita Adjustable Stock and Forend

## Installation Instructions

PART# A.1.10.1250, A.1.20.1250, A.1.30.1250

(Fits: 12 Ga Mossberg 500/535/590/835)

Advanced Technology  
INTERNATIONAL

### Forend Installation

#### Step #6

Align the bolt slide with the cut out in the receiver by moving the forend and the action bars back and forth. Remove the bolt slide upward. Pull the forend and action bars forward & remove from the magazine tube.

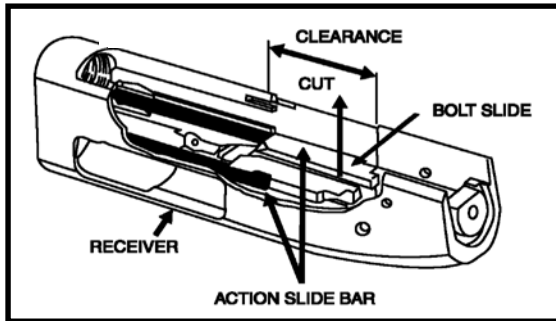


Figure 5

#### Step #8

After removing the plastic bridges, assemble the forend to all models as shown. Due to varying receiver widths there may be interference between the rear of the forend and the front of the receiver. If this occurs use a rotary tool or file to remove material from the rear of the forend. (Fig. 7)



Figure 7

#### Step #7

Remove the plastic molding bridge from the front and rear adapter by using a pliers or knife before installing it to the forend.



Figure 6A

Figure 6B

#### Step #9

To reassemble, slide the forend back on the magazine tube and align the action bars with the openings in the receiver.

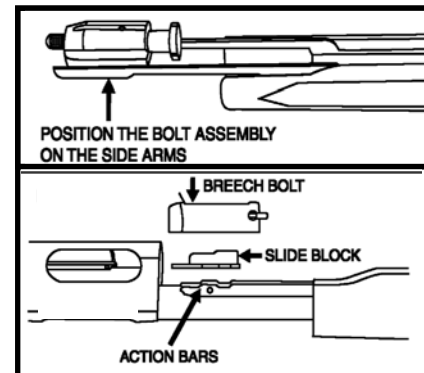


Figure 8

Advanced Technology International • Made In the USA • Limited Lifetime Warranty  
2733 West Carmen Ave • Milwaukee, WI 53209  
Toll Free: 800.925.2522 • Fax: 414.464.3112



# Mossberg Akita Adjustable Stock and Forend

## Installation Instructions

PART# A.1.10.1250, A.1.20.1250, A.1.30.1250

(Fits: 12 Ga Mossberg 500/535/590/835)

Advanced Technology  
INTERNATIONAL

### Forend Installation

#### Step #10

Align the slots on the action bars with the slots on the bolt slide and replace the bolt slide. (Fig. 11)

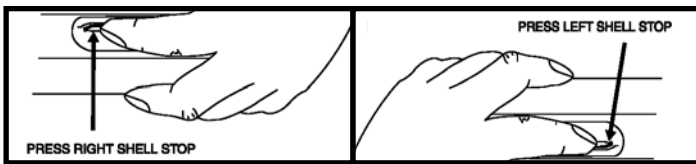


Figure 9

Figure 10

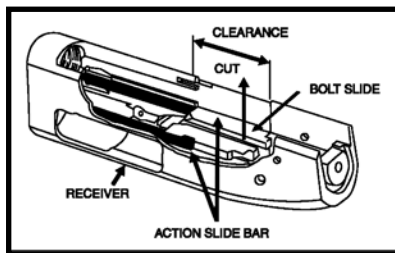


Figure 11

#### Step #21

Replace the trigger group and the pin. (Fig. 13)

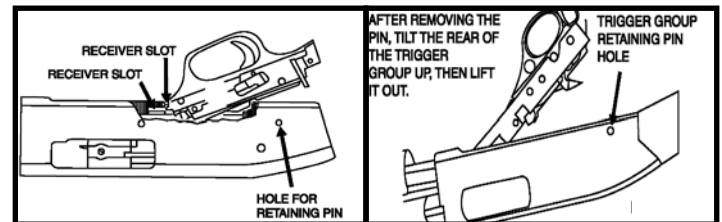


Figure 13

Figure 14

#### Step #11

Replace both the shell interrupter and the shell stop. (Fig. 12)

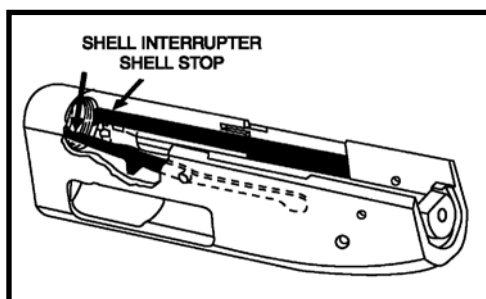


Figure 12

Advanced Technology International • Made In the USA • Limited Lifetime Warranty  
2733 West Carmen Ave • Milwaukee, WI 53209  
Toll Free: 800.925.2522 • Fax: 414.464.3112

[www.ATIGunstocks.com](http://www.ATIGunstocks.com)